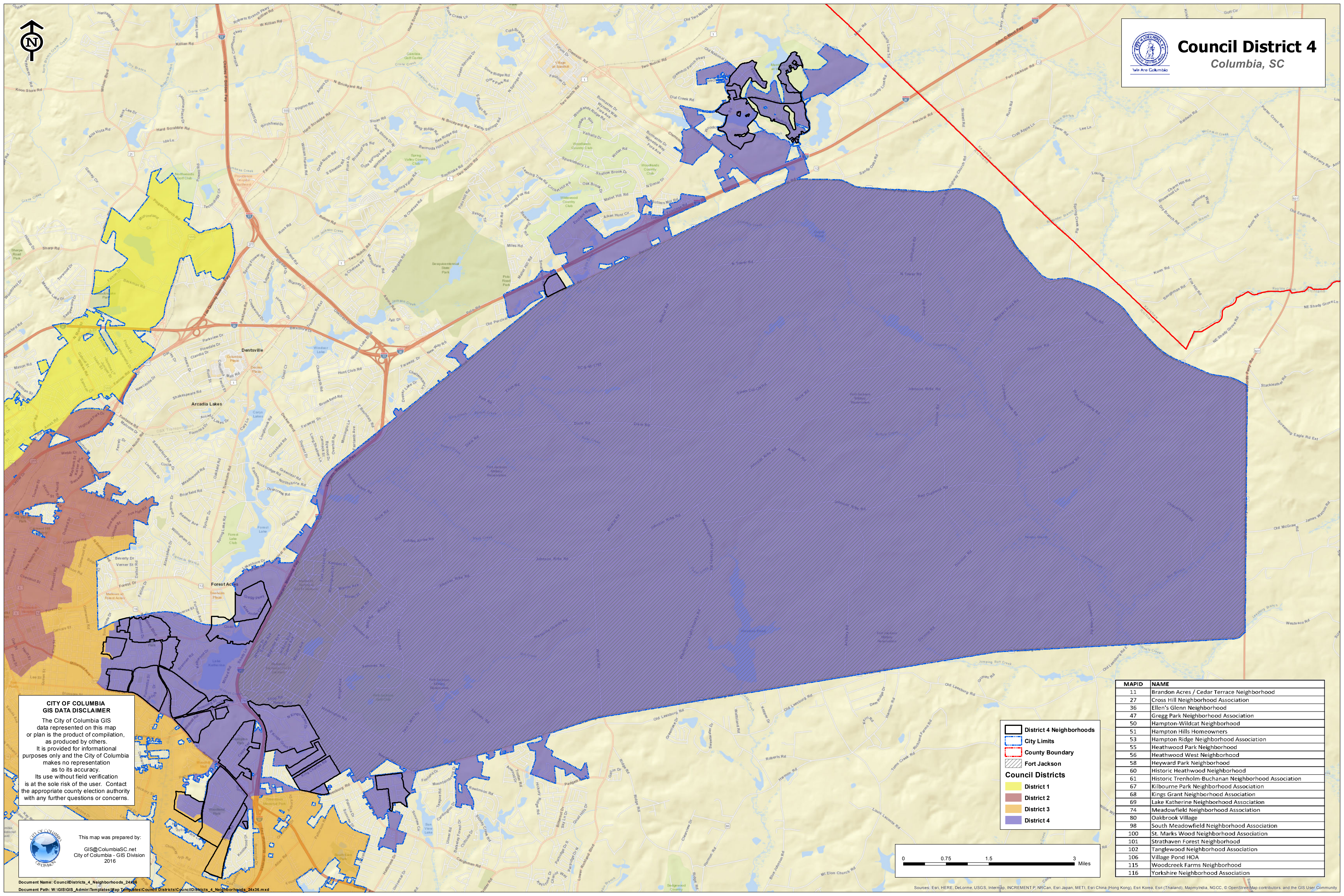




Council District 4
Columbia, SC



**CITY OF COLUMBIA
GIS DATA DISCLAIMER**

The City of Columbia GIS data represented on this map or plan is the product of compilation, as produced by others. It is provided for informational purposes only and the City of Columbia makes no representation as to its accuracy. Its use without field verification is at the sole risk of the user. Contact the appropriate county election authority with any further questions or concerns.

This map was prepared by:
GIS@ColumbiaSC.net
City of Columbia - GIS Division
2016

District 4 Neighborhoods

City Limits

County Boundary

Fort Jackson

Council Districts

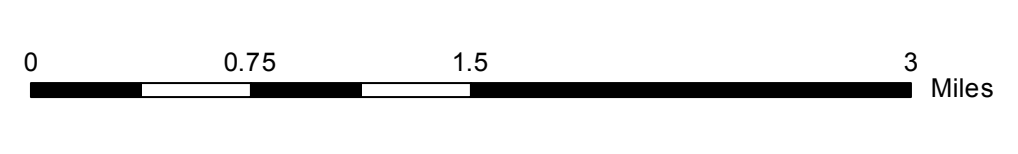
District 1

District 2

District 3

District 4

MAPID	NAME
11	Brandon Acres / Cedar Terrace Neighborhood
27	Cross Hill Neighborhood Association
36	Ellen's Glenn Neighborhood
47	Gregg Park Neighborhood Association
50	Hampton-Wildcat Neighborhood
51	Hampton Hills Homeowners
53	Hampton Ridge Neighborhood Association
55	Heathwood Park Neighborhood
56	Heathwood West Neighborhood
58	Heyward Park Neighborhood
60	Historic Heathwood Neighborhood
61	Historic Trenholm-Buchanan Neighborhood Association
67	Kilbourne Park Neighborhood Association
68	Kings Grant Neighborhood Association
69	Lake Katherine Neighborhood Association
74	Meadowfield Neighborhood Association
80	Oakbrook Village
98	South Meadowfield Neighborhood Association
100	St. Marks Wood Neighborhood Association
101	Strathaven Forest Neighborhood
102	Tanglewood Neighborhood Association
106	Village Pond HOA
115	Woodcreek Farms Neighborhood
116	Yorkshire Neighborhood Association



Sources: Esri, HERE, DeLorme, USGS, Intermap, INCREMENT P, NRCan, Esri Japan, METI, Esri China (Hong Kong), Esri Korea, Esri (Thailand), MapmyIndia, NGCC, © OpenStreetMap contributors, and the GIS User Community